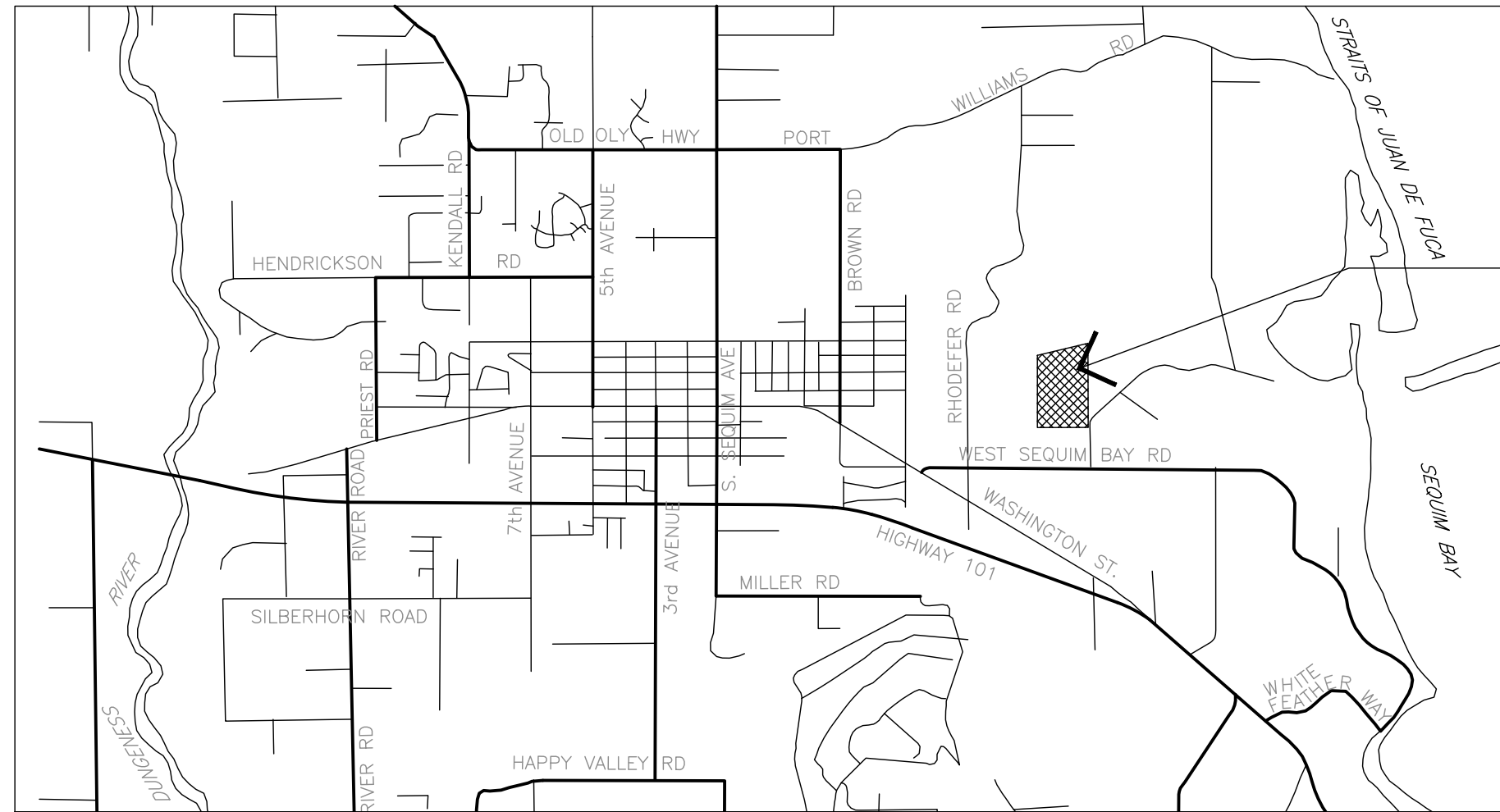


CITY OF SEQUIM
APPROVED FOR CONSTRUCTION

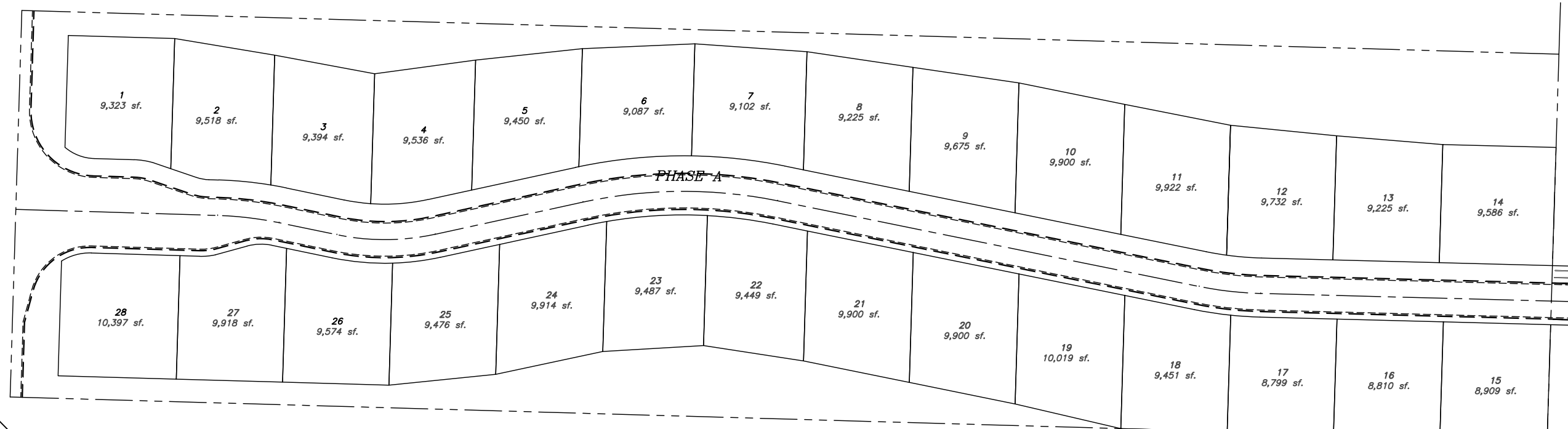
BY: _____ DATE: _____
PUBLIC WORKS DIRECTOR

THESE PLANS ARE APPROVED FOR CONSTRUCTION FOR A PERIOD OF 12 MONTHS FROM THE DATE SHOWN ABOVE. THE CITY RESERVES THE RIGHT TO MAKE REVISIONS, MODIFICATIONS AND CHANGES SHOULD CONSTRUCTION BE DELAYED BEYOND THIS TIME LIMIT.



SEQUIM VICINITY MAP
NO SCALE

CITY OF SEQUIM, MAJOR PRELIMINARY SUBDIVISION (SUB 17/002) FOR:
WILLOW CREEK MANOR
IN SECTION 21, TOWNSHIP 30 NORTH, RANGE 3 WEST, W.M.
CITY OF SEQUIM, CLALLAM COUNTY



PROJECT BENCHMARK:
EL = 110.40 NAVD '88
4"x4" CONC MON. WITH
3-1/2" BRASS CAP.
GEOMPT #03302041

PROJECT INFORMATION

APPLICANT/OWNER: COLE GROUP
1190 EAST WASHINGTON STREET
SEQUIM, WA 98382

PROPOSED PROJECT: WILLOW CREEK MANOR - PHASE C

ZONING: R4-8

UTILITIES: SANITARY SEWER, WATER - CITY OF SEQUIM
POWER - CLALLAM COUNTY PUD #1
TELEPHONE - CENTURY LINK
CABLE TELEVISION - WAVE BROADBAND

PARCEL NO.: 03-30-21-55-0002

DATE OF PREPARATION: MAY 2020

HORIZONTAL AND VERTICAL DATUM: HORIZ. NAD 83/91
VERT. NAVD 88

BENCHMARK: 4"x4" CONC MON. WITH 3-1/2" BRASS CAP. GEOMPT #03302041
ELEV = 110.40'

DRAWING INDEX

- C001 COVER SHEET
- C002 PROJECT NOTES
- C101 TESC PLAN
- C102 TESC DETAILS
- C201 PAVING AND GRADING PLANS
- C210 PAVING DETAILS
- C211 ROADWAY PROFILES
- C301 UTILITY PLAN
- C311 UTILITY DETAILS (1)
- C312 UTILITY DETAILS (2)
- C401 STORMWATER PLAN
- C410 STORMWATER DETAILS
- C501 LANDSCAPING AND IRRIGATION PLAN
- C601 BASIN MAP

PHASE LIST

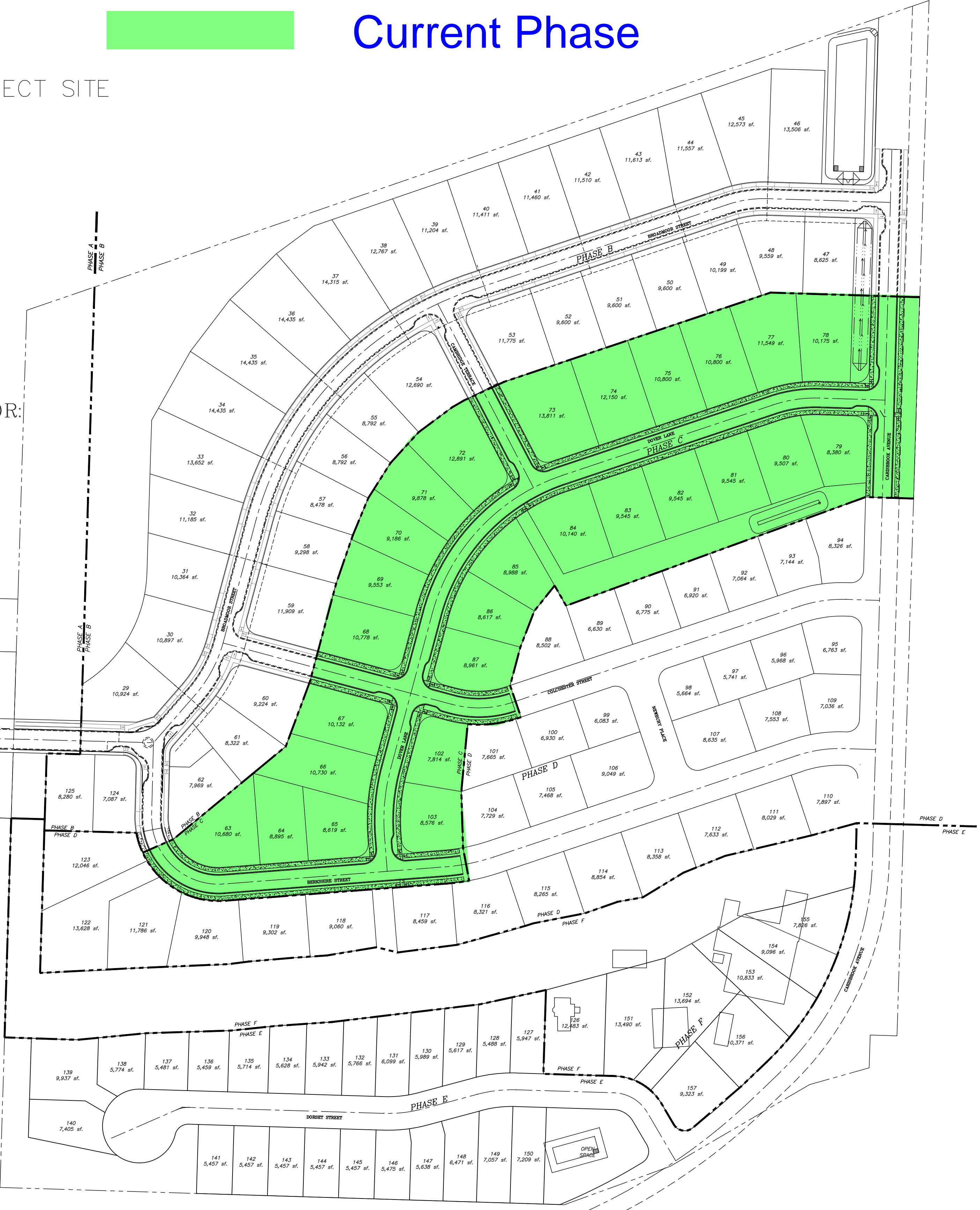
PHASE B: LOTS 29-62, 124, 125
PHASE C: LOTS 63-87, 102, 103
PHASE D: LOTS 88-101, 104-123
PHASE E: LOTS 127-150
PHASE F: LOTS 151-156

CALL BEFORE YOU DIG
1-800-424-5555
FOR UNDERGROUND UTILITY
LOCATION SERVICE



Current Phase

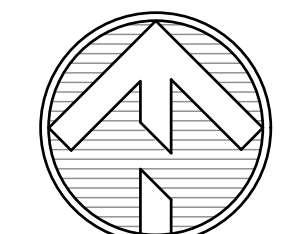
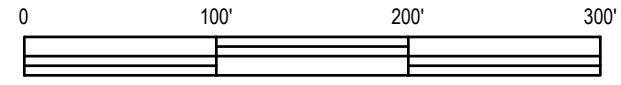
PROJECT SITE



Not for
Construction

PHASING PLAN

Scale: 1" = 100'



ZENOVIC & ASSOCIATES
INCORPORATED
301 E. 6TH STREET, SUITE 1
PORT ANGELES, WA 98382
PHONE: (360) 417-0501
FAX: (360) 417-0516
EMAIL: ZENOVIC@ZENOVIC.NET

REVISIONS:	DATE	MARK	NOTE

TITLE: WILLOW CREEK MANOR SUBDIVISION - PHASE C, SEQUIM, WA

CLIENT: THE COLE GROUP
1190 EAST WASHINGTON STREET
SEQUIM, WA 98382

SCALE: AS NOTED

FILE: 16484 -PH-C-E3

JOB NO: 16484

DATE: May 11, 2020

SET: PERMIT



SHEET
C001