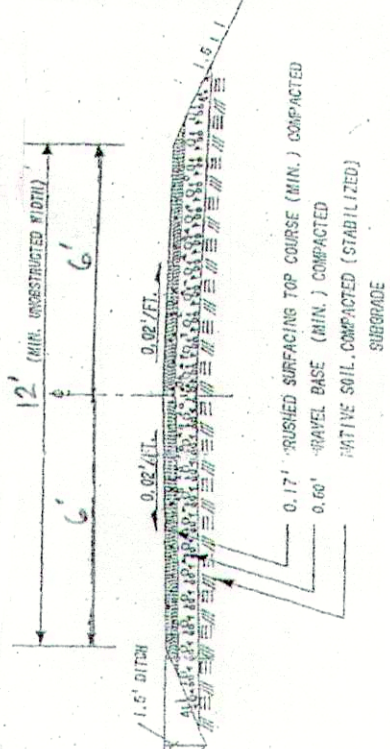
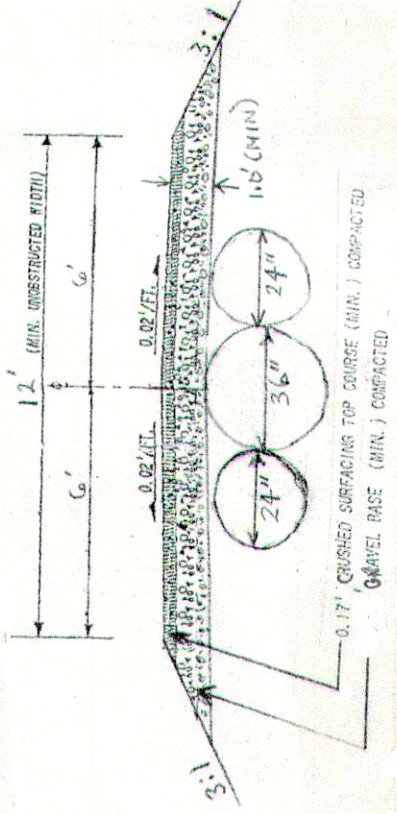


ROADWAY DESIGN STANDARD



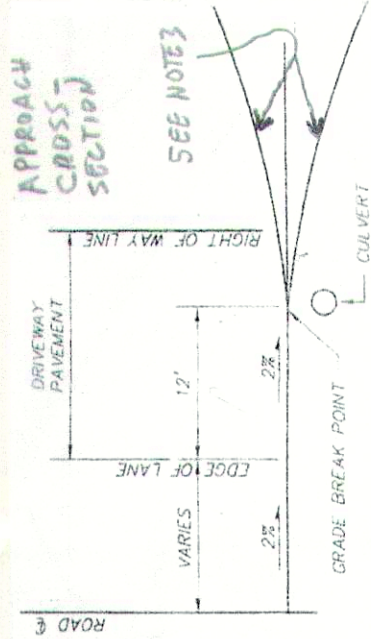
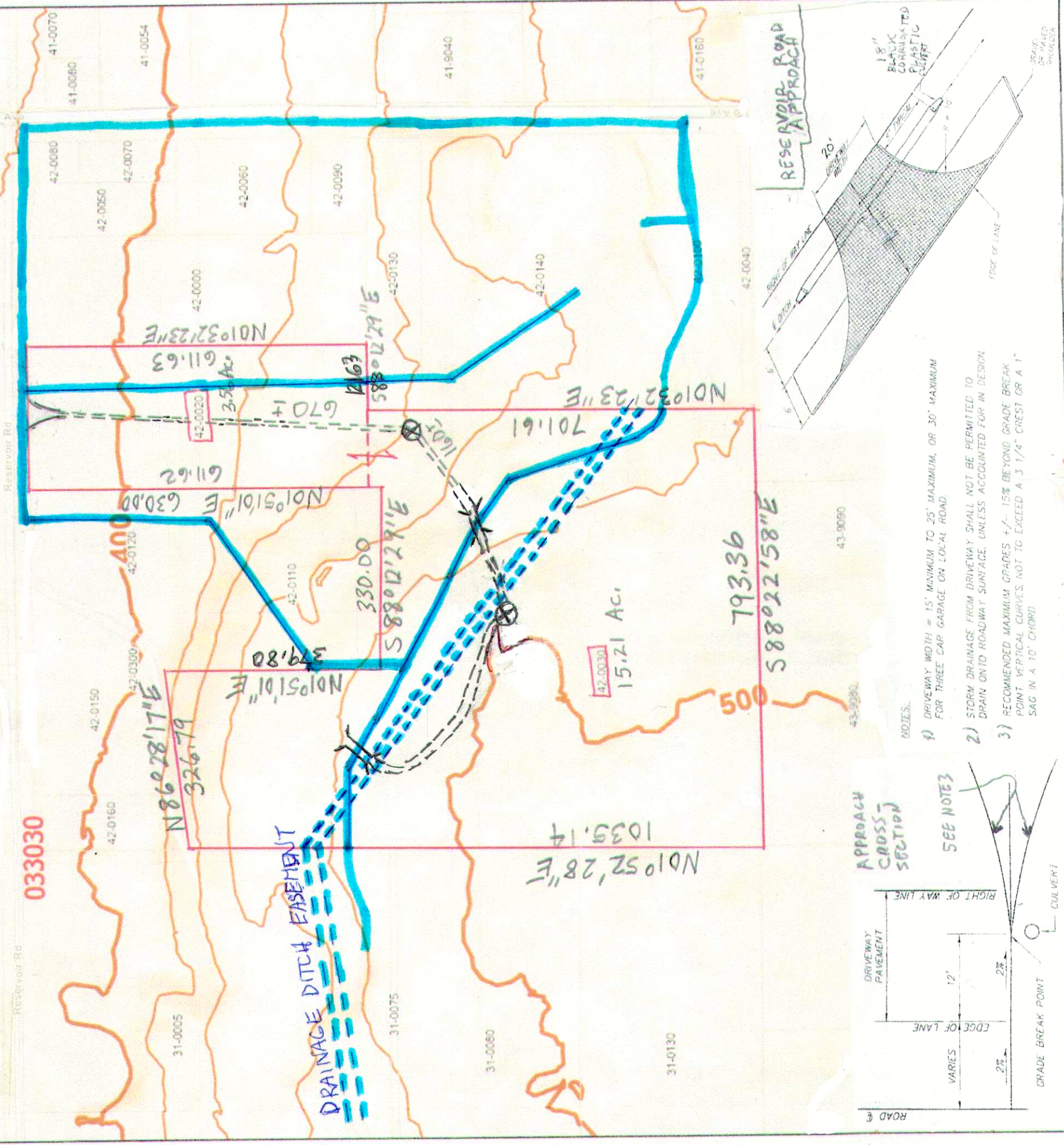
NOTES:
 BALLAST / GRAVEL BASE DEPTH SHOWN IS A MINIMUM AND MAY BE INCREASED DUE TO SOIL CONDITION.
 SURGRADE MAY REQUIRE ADDITIONAL WORK DUE TO SOIL CONDITIONS.
 MAXIMUM GRADES: 12% TYPICAL; 14% FOR NO MORE THAN 300 FEET; 16% FOR NO MORE THAN 30 FEET IF PAVED WITH ASPHALT, CONCRETE OR BITUMINOUS SURFACE TREATMENT.

PROPOSED DRAINAGE DITCH CROSSING



0.17" CRUSHED SURFACING TOP COURSE (MIN.) COMPACTED
 GRAVEL BASE (MIN.) COMPACTED

033030



SEE NOTES

- NOTES:
- 1) DRIVEWAY WIDTH = 15' MINIMUM TO 25' MAXIMUM, OR 30' MAXIMUM FOR THREE CAR GARAGE ON LOCAL ROAD.
 - 2) STORM DRAINAGE FROM DRIVEWAY SHALL NOT BE PERMITTED TO DRAIN ONTO ROADWAY SURFACE, UNLESS ACCOUNTED FOR IN DESIGN.
 - 3) RECOMMENDED MAXIMUM GRADES +/- 15% BEYOND GRADE BREAK POINT VERTICAL CURVES, NOT TO EXCEED A 3 1/4" CREST OR A 1" SAG IN A 10' CHORD.

12/15/2022, 3:00:51 PM

Sections (RTS)

Parcel No (last 6 digits)

Cities (Incorporated & Unincorporated)

Parcel Boundary

PROPOSED LANDING

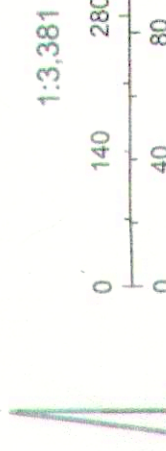
PROPOSED DRAINAGE DITCH CROSSING

20 ft contours (lidar)

0

Index

AS-BUILT DRAINAGE DITCH
 PER CLALLAM CO./CITY OF SEQUIM



1:3,381

1" = 200'

[4319]

Geometry and inherent attributes (including PNUM, VERSION, PROP_ID, ACRES, GIS, ACRES, SURV, COATE, EDIT_DATE, MDOC_DATE, MDOC_AFN, LOT, BLOCK, TIDELAND, and GEO_12) are generated by the Clallam County Assessor's Office and Information Technology GIS Staff. Current layer: Susan