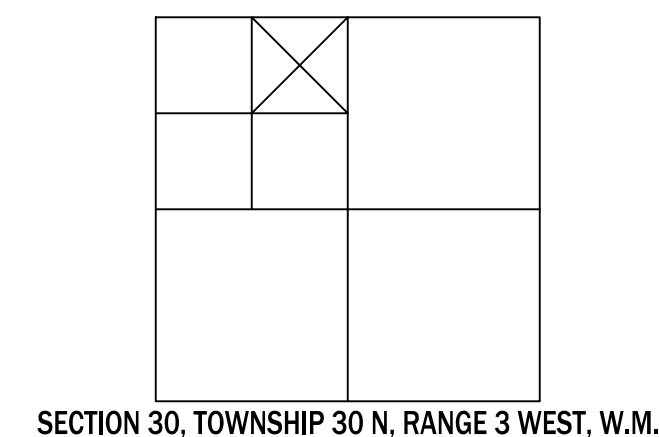
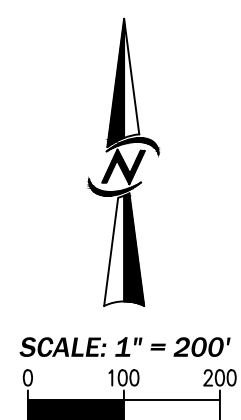
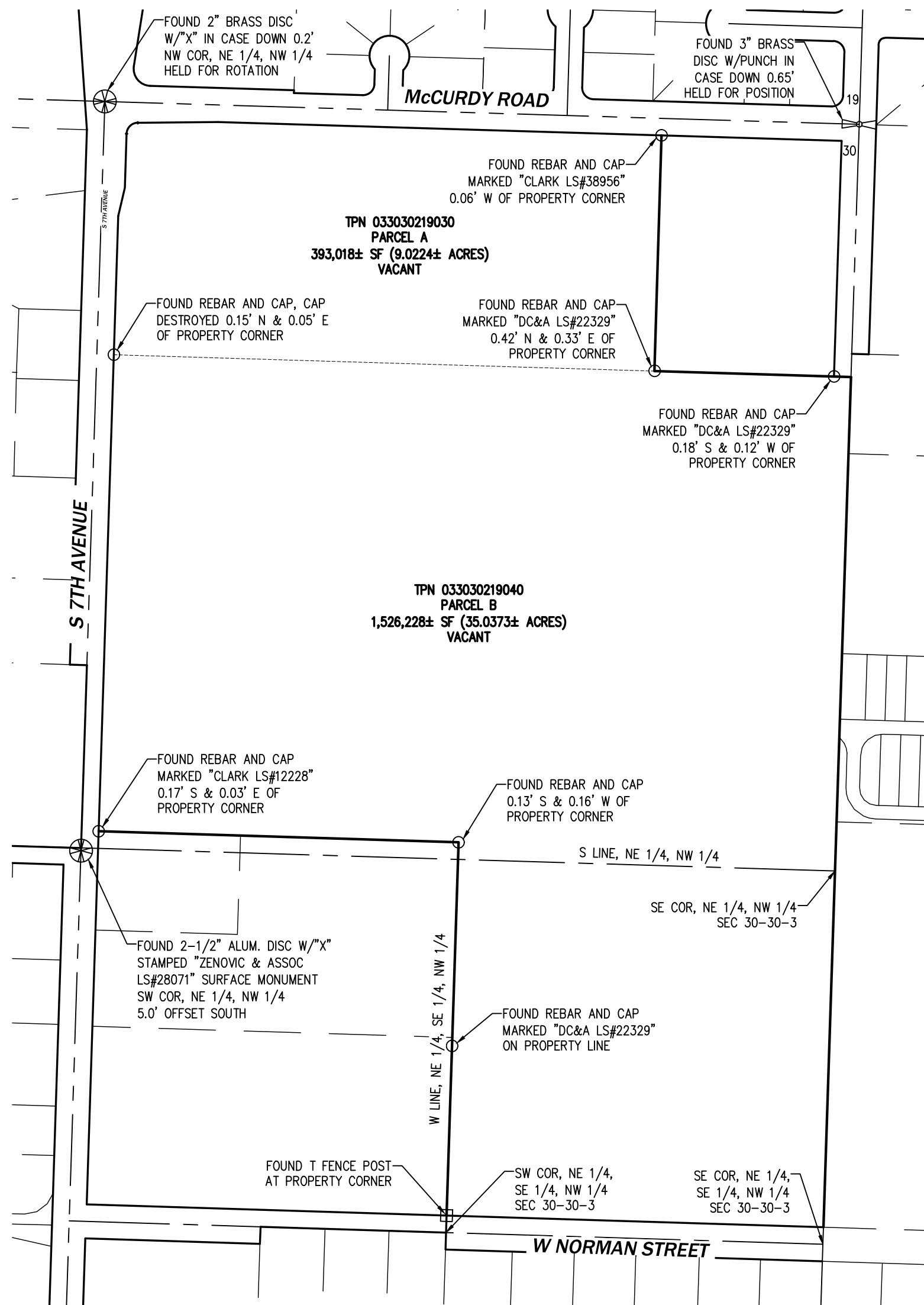


LITTLEJOHN

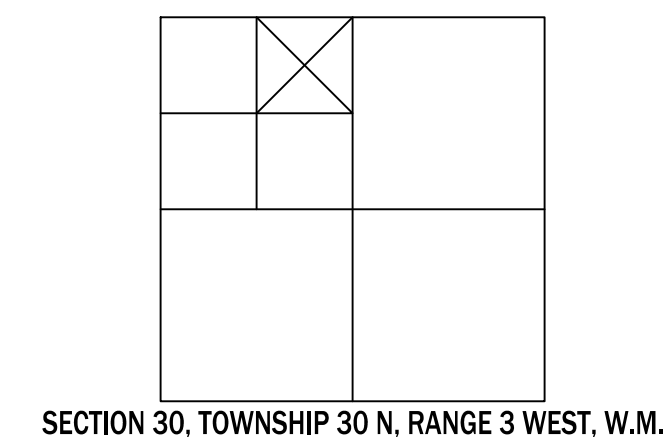
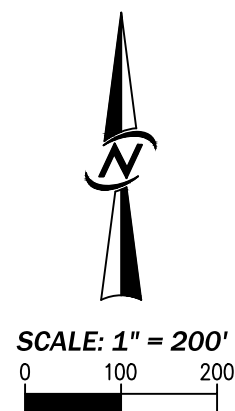
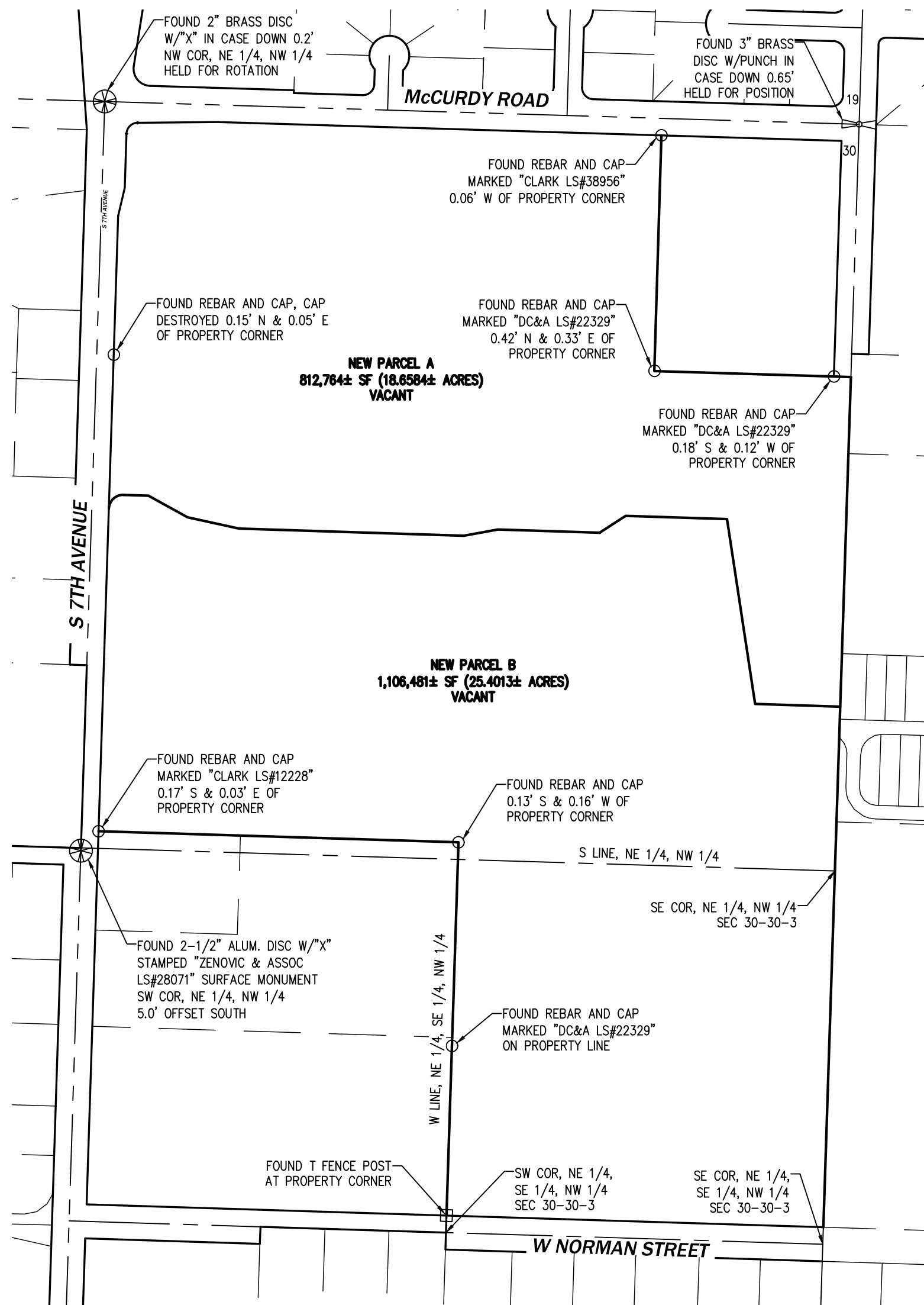
A BOUNDARY LINE ADJUSTMENT
A PORTION OF THE E 1/2, OF THE NW 1/4
SECTION 30, TOWNSHIP 30 NORTH, RANGE 3 WEST, W.M.
CITY OF SEQUIM, CLALLAM COUNTY, WASHINGTON



BEFORE

LITTLEJOHN

A BOUNDARY LINE ADJUSTMENT
 A PORTION OF THE E 1/2, OF THE NW 1/4
 SECTION 30, TOWNSHIP 30 NORTH, RANGE 3 WEST, W.M.
 CITY OF SEQUIM, CLALLAM COUNTY, WASHINGTON



AFTER